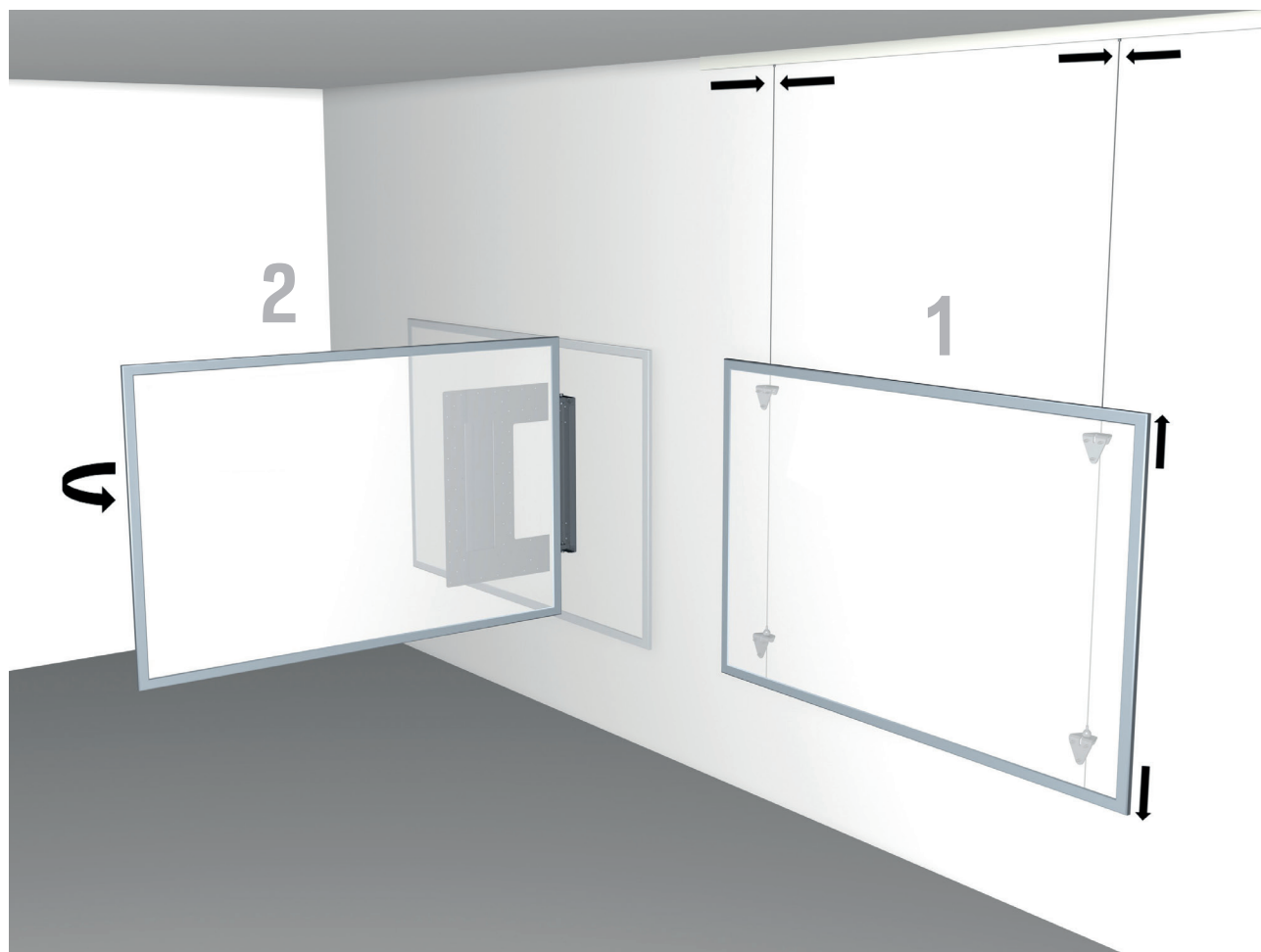


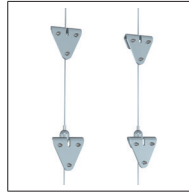
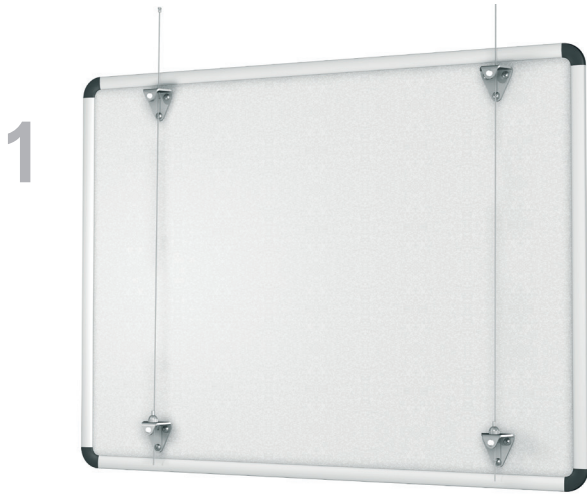
HANGING WHITEBOARDS



There are a variety of ways to hang a whiteboard on the wall. Hanging a whiteboard with the aid of the Whiteboardset offers the option of repositioning the whiteboard either horizontally or vertically. The Artiteq Whiteboardset has been designed to make it easy to hang a whiteboard on the wall, and offers flexibility since it may be used in combination with our hanging rails. The clamps ensure a stable mounting of the whiteboard to the wall. By combining the Whiteboardset with the hanging rail, it is extremely easy to mount the whiteboard to the precise desired spot.

The Whiteboardsupport is a wall bracket that offers a flexible way to swivel the whiteboard away from the wall. This bracket has been specially designed to offer the option of extending and swiveling the whiteboard up to 90 degrees away from the wall. The whiteboard may be returned to a flat position against the wall, making it ideal for small office or rooms with a limited amount of space.

WHITEBOARDSET / SUPPORT



MAX
30
KG

CAN BE USED IN COMBINATION WITH ALL WALL AND CEILING SYSTEMS (PAGES 8 TO 35)

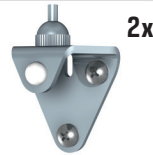
WHITEBOARDSET



WHITEBOARDSET
(HANGING WIRE NOT INCLUDED)*



CLAMP UP



CLAMP DOWN



SCREW 8 mm



SCREW 12 mm

ARTICLE NO. 9.4550

* TO BE USED WITH TWISTER 2 mm STEELWIRE (SEE P. 17)

2



TO BE USED WITH WHITEBOARDS WITH HEIGHT BETWEEN 90 AND 120 cm AND WIDTH BETWEEN 120 AND 200 cm

WHITEBOARDSUPPORT



WHITEBOARDSUPPORT
INCLUDES FASTENER MATERIAL

85 cm x 71 cm x 8 cm

ARTICLE NO. 7550.100